

# ICS

**INTEGRATED COLLECTION SYSTEM**

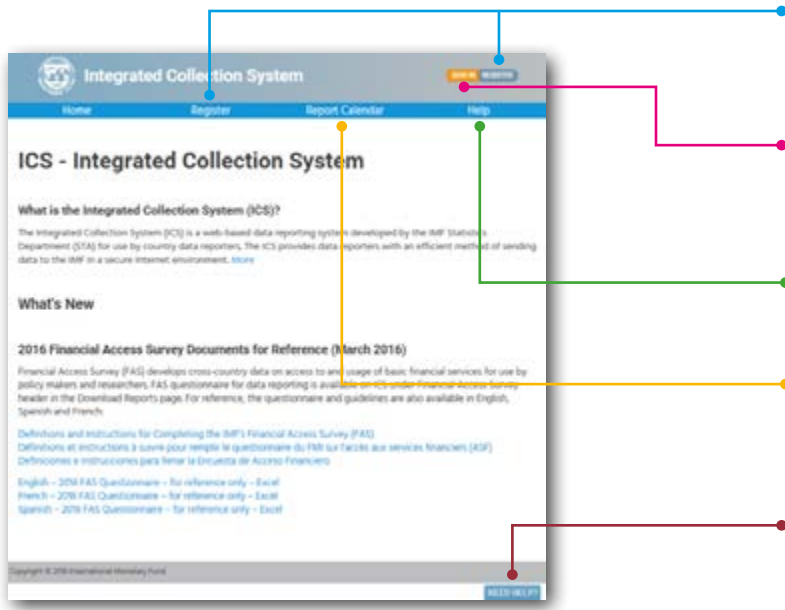
## A Secure Online Tool for Reporting Country Data

The Integrated Collection System (ICS) is a web-based statistical data and metadata reporting system developed by the IMF Statistics Department (STA) for use by country reporters.

### Reporting Data to the IMF Statistics Department

1. Excel reporting only includes download and upload.
2. Submit data in Excel or SDMX
3. Monitor all ICS reporting at the country level
4. Add or assign correspondents eligible to report data and metadata to the IMF
5. Request changes to report assignments
6. Update your contact information online
7. Access latest news and reporting schedules
8. Obtain support directly from the IMF Statistics Department

# HOW TO REGISTER



Register here to become a ICS user

---

Login here to access available services

---

Access online Help

---

Find reporting cycles for different sectors

---

Get instant answers and email support

# WHO CAN REGISTER

Data reporters are nominated or approved by their country coordinator to submit data electronically via the ICS. A country coordinator is a person designated by each IMF member country as being responsible for overseeing its data reporting to the IMF Statistics Department. A country official can become an ICS correspondent by requesting access to ICS via the registration page or being nominated by the country coordinator.

# REGISTER ONLINE

Correspondent information	Reports Allocation	Preview
<ul style="list-style-type: none"> <li>• Personal Information</li> <li>• Country/Reporting Entity Information</li> <li>• Contact Information</li> <li>• Reporting Scope</li> </ul>	<ul style="list-style-type: none"> <li>• Reports</li> <li>• Statistics Department</li> <li>• Data Dissemination Bulletin Board</li> </ul>	<ul style="list-style-type: none"> <li>• Review and Submit ICS Online Registration</li> </ul>

Select to change reporting country

Manage Requests, Correspondents and Reports

Access the Metadata Web form

Download the Excel Data Report Form

Upload the Excel Data Report Form

Upload the Global SDMX-ML report

Submit the ODP/EcoFin SDMX Report

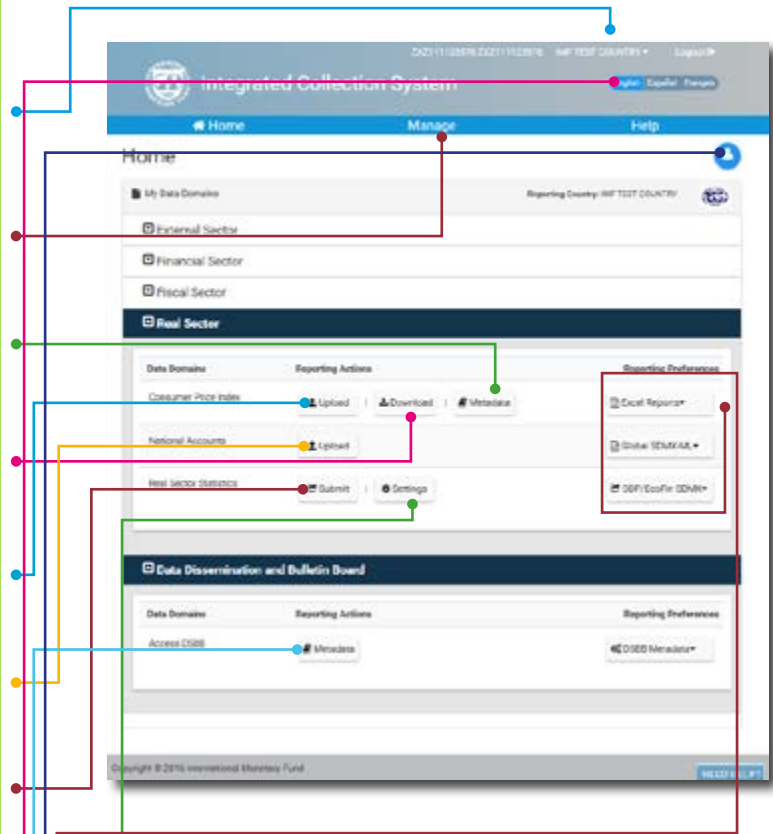
Settings for ODP/EcoFin SDMX Report

Access the ARC, Certification, and/or Metadata Editors

Select to change display language

User Profile

Set the data submission type for each individual report



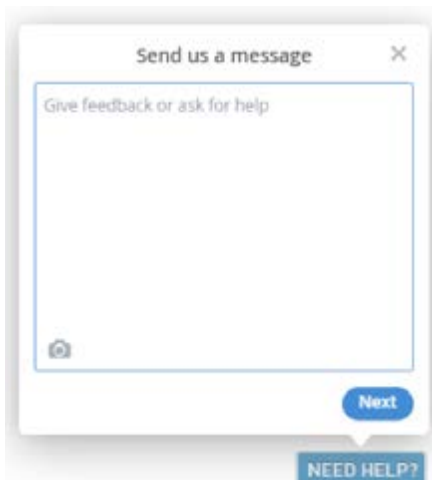
Once you have logged in, you can securely submit data and Metadata to the IMF Statistics Department.

1. Download and Upload Excel data report forms (DRF)
2. Upload EcoFin SDMX
3. Upload Global SDMX
4. Submit metadata questionnaires
5. Edit your Advance Release Calendar (e-GDDS/SDDS/SDDS Plus)
6. Edit metadata (e-GDDS/SDDS/SDDS Plus)
7. Certify metadata (SDDS/SDDS Plus)
8. Setup reporting preferences
9. Manage registration requests and correspondents
10. Update profile and Data Domain permissions

# SUPPORT FOR ICS

## Online Help and Video Tutorial

A knowledge base to answer common questions and help you find the information when you need it. For more information, [please visit http://datareportinghelp.imf.org/](http://datareportinghelp.imf.org/).



You can view instant answers and submit support requests without leaving ICS or signing into another system.

## Benefits of Using ICS

- Transmit reported data and metadata instantly, securely and electronically
- View reported data in a timely fashion
- A standardized and automated process

## System Requirements

To use ICS you need the following:

- A computer with a connection to the Internet;
- A web browser, preferably Microsoft Internet Explorer (version 10.0 or higher) or Google Chrome;
- Microsoft Excel 2007 or higher; and
- An individual e-mail account

**Register to become a correspondent by completing the online ICS registration form at:**

<https://www-ics.imf.org>

ICS Administrator  
IMF Statistics Department  
International Monetary Fund  
700 19th Street, NW  
Washington, DC 20431  
Email: [icsinquiry@imf.org](mailto:icsinquiry@imf.org)